

# Technical data sheet

## Product features



### Rack conveyor dishwasher 300, cold water, right exit, corner dryer

<b>Model</b>	<b>SAP Code</b>	00018479
--------------	-----------------	----------



- Display type: Touch display
- Number of programs: 5
- Number of skin: 2
- Maximal rack feed [racks/h]: 300
- Door clear height [mm]: 450
- Rack size [mm]: 500x500
- Water consumption of the washing cycle [l/basket]: 0,6-1,1
- Washing cycle time [s/basket]: 18
- Detergent and rinse pump system: ProDose - accurate dosing with a peristaltic pump
- Wash pump type: two-way - DuoFlow
- Detergent dispenser: Yes
- Rinse aid dispenser: Yes

<b>SAP Code</b>	00018479	<b>Boiler power [kW]</b>	28.000
<b>Net Width [mm]</b>	4771	<b>Basin volume [l]</b>	70
<b>Net Depth [mm]</b>	880	<b>Tank power [kW]</b>	10.500
<b>Net Height [mm]</b>	1615	<b>Water consumption of the washing cycle [l/basket]</b>	0,6-1,1
<b>Net Weight [kg]</b>	840.00	<b>Washing cycle time [s/basket]</b>	18
<b>Power electric [kW]</b>	46.800	<b>Maximal rack feed [racks/h]</b>	300
<b>Loading</b>	400 V / 3N - 50 Hz	<b>Door clear height [mm]</b>	450
<b>Boiler capacity [ l ]</b>	34.00	<b>Rack size [mm]</b>	500x500

# Technical data sheet

Technical drawing



Rack conveyor dishwasher 300, cold water, right exit, corner dryer

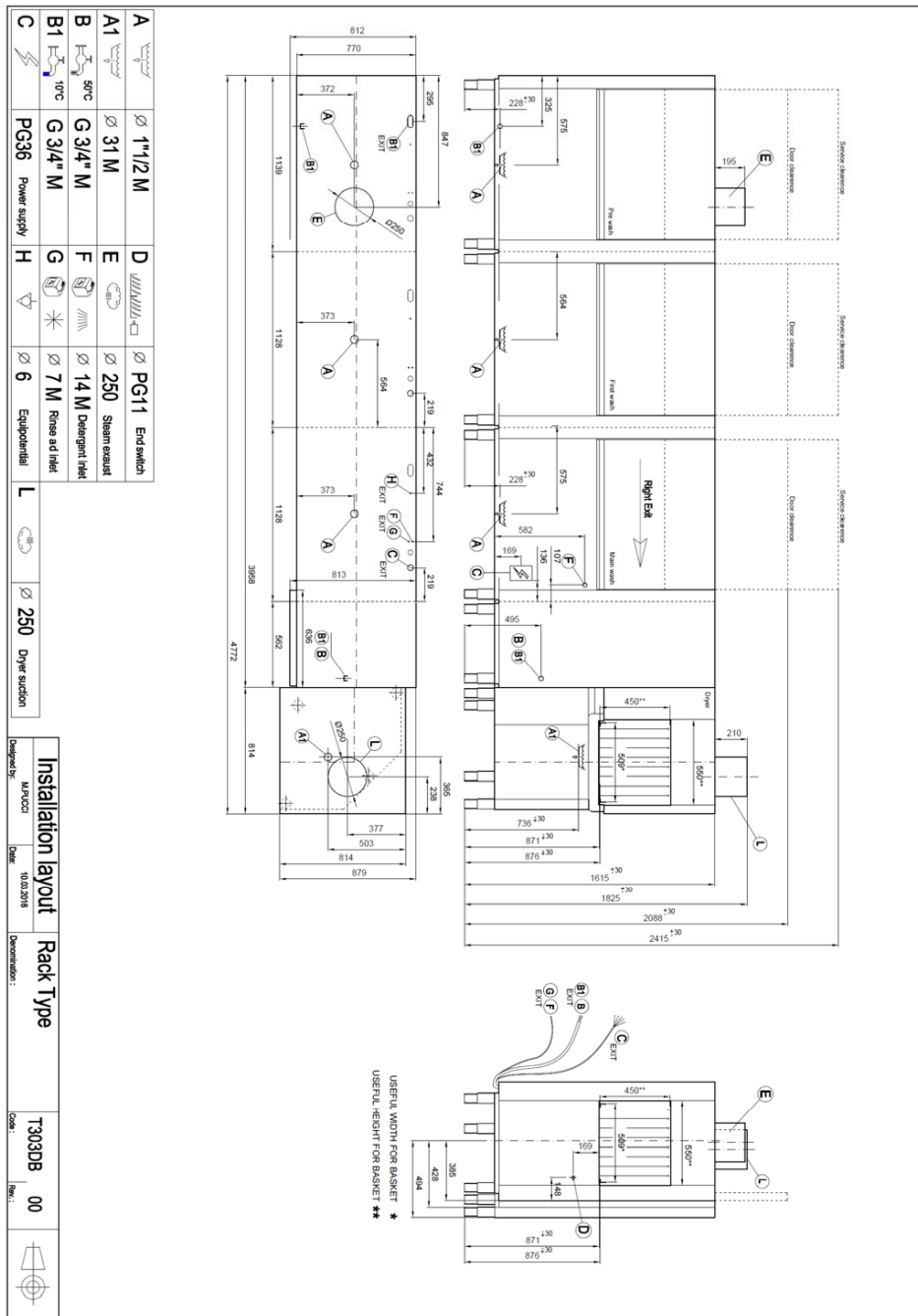
Model

SAP Code

00018479

TECHNICAL FILE

2021



# Technical data sheet

## Technical parameters



### Rack conveyor dishwasher 300, cold water, right exit, corner dryer

<b>Model</b>	<b>SAP Code</b>	00018479
--------------	-----------------	----------

**1. SAP Code:**

00018479

**15. Number of programs:**

5

**2. Net Width [mm]:**

4771

**16. Opening of device:**

Retractable up

**3. Net Depth [mm]:**

880

**17. Door clear height [mm]:**

450

**4. Net Height [mm]:**

1615

**18. Inlet pressure [bar]:**

0,5-4

**5. Net Weight [kg]:**

840.00

**19. Adjustable feet:**

Yes

**6. Gross Width [mm]:**

5600

**20. Number of skin:**

2

**7. Gross depth [mm]:**

1200

**21. Modular construction:**

Yes

**8. Gross Height [mm]:**

2060

**22. Pre-wash module:**

Yes

**9. Gross Weight [kg]:**

900.00

**23. Maximal rack feed [racks/h]:**

300

**10. Device type:**

Electric unit

**24. Self-cleaning cycle:**

No

**11. Control type:**

Touchscreen

**25. Boiler capacity [ l ]:**

34.00

**12. Material:**

AISI 321

**26. Boiler power [kW]:**

28.000

**13. Power electric [kW]:**

46.800

**27. Basin volume [l]:**

70

**14. Loading:**

400 V / 3N - 50 Hz

**28. Tank power [kW]:**

10.500

# Technical data sheet

## Technical parameters



### Rack conveyor dishwasher 300, cold water, right exit, corner dryer

**Model**

**SAP Code**

00018479

**29. Number of washing arms:**

5

**30. Number of rinsing arms:**

5

**31. Number of arms for both rinsing and washing:**

1

**32. Arm connection:**

Click-clack - easy removal with one hand

**33. Washing arm type:**

Firm

**34. Washing arm material:**

Stainless steel

**35. Atmospheric boiler with rinse pump:**

Yes

**36. Rinsing arm type:**

Firm

**37. Rinsing arm material:**

Stainless steel

**38. Deep drawn tank:**

Yes

**39. Drain filter:**

ProGressive + Evolution3 - triple filtration captures particles up to 0.8 mm in size, electronically controlled partial discharge before the rinsing phase ensures 0% loss of clean water into the waste

**40. Thermostop:**

Yes

**41. Boiler thermostat adjust:**

Yes

**42. Rack feed capacity:**

160-210-230-250-300

**43. Detergent and rinse pump system:**

ProDose - accurate dosing with a peristaltic pump

**44. Energy Saving system:**

Energy saving mode

**45. Rinse system:**

UltraRinse3 - composite arms common for rinsing and washing with geometry for spraying rinse water in thin jets directly against dishes

**46. Heating system:**

HotWash - System of simultaneous operation of the heating element of the bath and the boiler, reducing the time for starting the next cycle

**47. Hot water electric valve:**

No

**48. Rack size [mm]:**

500x500

**49. Min supply water temperature [°C]:**

10

**50. Max supply water temperature [°C]:**

60

**51. Built-in softener:**

No

**52. Display type:**

Touch display

# Technical data sheet

Technical parameters



Rack conveyor dishwasher 300, cold water, right exit, corner dryer

Model

SAP Code

00018479

**53. Display size:**

5"

**54. Location of control panel:**

On the front panel - long side

**55. Drain pump:**

No

**56. Self-diagnostics:**

Yes

**57. Double rinse:**

Yes

**58. Wash pump type:**

two-way - DuoFlow

**59. Detergent dispenser:**

Yes

**60. Rinse aid dispenser:**

Yes

**61. Water consumption of the washing cycle [l/basket]:**

0,6-1,1

**62. Washing cycle time [s/basket]:**

18

**63. Rinse water temperature [°C]:**

82 (65)

**64. Program High Capacity:**

Yes

**65. Program General purpose:**

Yes

**66. Program Prolonged contact (DIN 10534):**

Yes

**67. Program Glasses:**

Yes